



"Environmental Solutions... Our job!"

## COMPANY PROFILE



### I. FRANTZIS and ASSOCIATES Ltd.

• Anastasiou Zinni 30 • 11741 Koukaki • Athens - Greece

☎ +30-2109846853 📠 +30-2109813442 ✉ info@i-frantzis.com • www.i-frantzis.com

### Organization and staffing

**I.FRANTZIS and ASSOCIATES Ltd.** is a consulting company, established in 1997 in Athens, Greece, providing technical consulting, environmental engineering and project management services, with special focus on waste management.

The company' s provided services cover a broad spectrum including waste management, environment, energy, technical engineering and project management, starting from conceptual design, up to construction supervision, and client' s training on project operation.

Our clients include Ministries, regional authorities, municipalities, construction companies, waste management associations and international financial institutions.

For more than 20 years, our waste management team of engineers, environmental scientists and planners, has helped customers develop business opportunities in the waste sector, while protecting communities and natural environment. Our philosophy follows the established waste hierarchy of waste prevention, minimisation, reuse, recycling, energy recovery and final disposal.

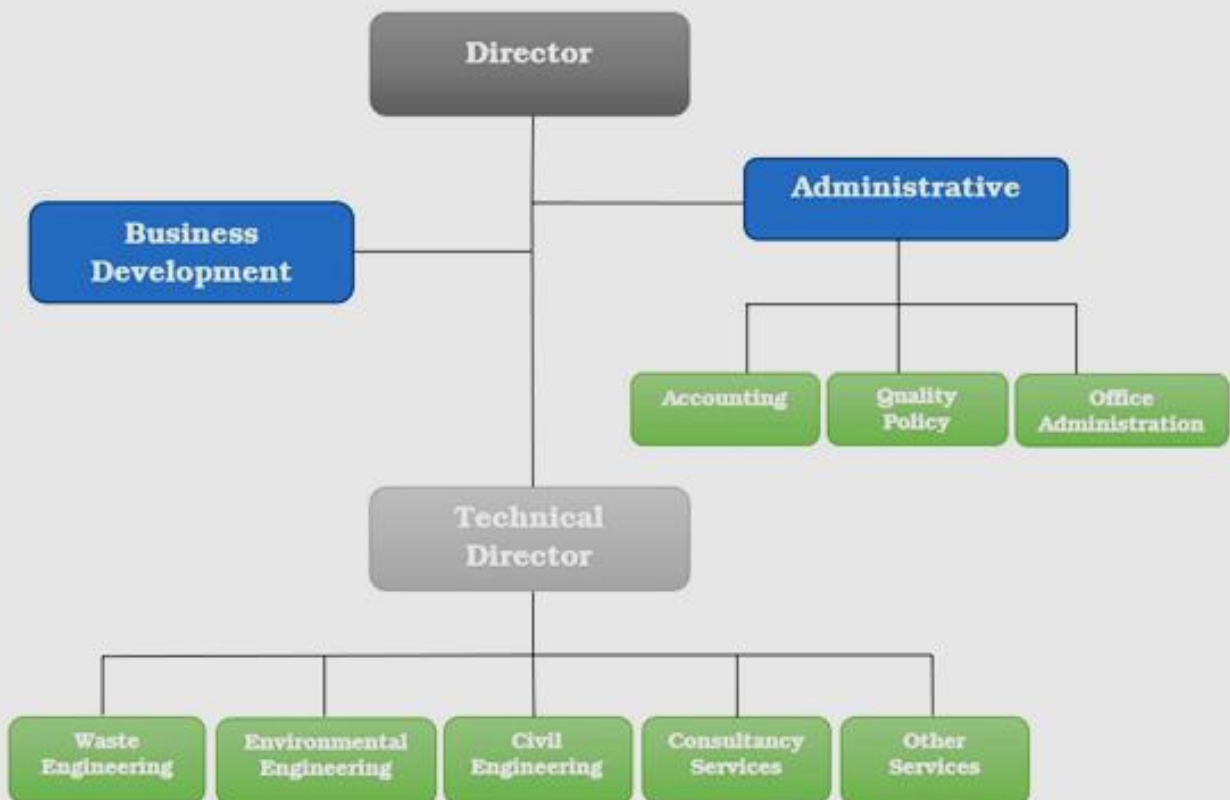
The firm is staffed with 10 experienced consultants, engineers and scientists who work to the highest standards, completing successfully projects and playing a leading role in Greece.

Furthermore the firm has successfully completed projects in Europe, South East and Western Asia. The company also co-operates with a wide range of freelance experts and consultants in selected areas depending on the scope of the projects undertaken. In order to effectively assist our clients, our professionals remain intimately familiar with the latest legal, regulatory, and technology advancements.

Highly professional and trained staff and implementation of **ISO 9001:2015** standard for quality management system and **ISO 14001:2015** for environmental management are guarantee of our quality provided services.



## Organization Chart



## Provided Services

The company offers a full range of environmental engineering, and consulting services that set new standards in quality, value, timeliness and cost-efficiency. We transfer innovative ideas, creative and value-based approaches to each project we work on in order to save you money and time by focusing efforts that balance practicality, legislative requirements, and cost-effectiveness.

We can support our clients through the entire project life cycle by providing consulting, engineering, construction management, operation and maintenance services. We offer these services individually or as part of our full-service approach.

## Activities Worldwide



### WASTE MANAGEMENT

The company provides fully integrated technical solutions to the waste sector serving both Greece and specific international markets where we have strong client relationships or there are challenges for new co operations.

For more than 20 years, our waste management team of engineers, environmental scientists and planners, has helped customers develop the business opportunities in the Solid Waste Sector while protecting communities and the natural environment.

Our waste management philosophy follows the established waste hierarchy of waste prevention, minimisation, reuse, recycling, energy recovery and final disposal.

The services offered by I.FRANTZIS and ASSOCIATES Ltd. include:



- Feasibility and cost-benefit analysis studies
- Detailed and conceptual design for Solid Waste Treatment Facilities (Mechanical, Biological, thermal treatment), energy from waste, biogas utilization, landfills, transfer stations, dumpsites rehabilitation
- Waste strategy and plan development
- Environmental management including modelling, monitoring, assessments, etc.
- Strategic planning for sitting, resource and waste management, financial modelling and recycling or resource recovery
- Legislative approvals and considerations including approvals for environmental planning, and infrastructure sitting and operation
- Alternative waste technologies assessment, selection, concept, design, feasibility and financing options
- Project management
- Procurement & Construction management

I.FRANTZIS and ASSOCIATES Ltd. has experience of leading and assisting procurement teams through tendering and associated procedures including open, restricted, negotiated and competitive dialogue processes for a variety of waste management facilities.

We also have considerable experience in providing technical support to both public and private sector during Competitive Dialogue process from outline business case through to preferred bidder and financial close. Last years we have been undertaking work for local authorities/ public sector as well as for potential contractors who are involved in a variety of waste procurement projects and can therefore demonstrate an understanding of both sides of this process.

## ENVIRONMENT

We have extensive experience in undertaking planning and environmental impact assessments (E.I.A.) for a wide range of projects that are mainly focused in waste and renewable energy resources sectors.

The company has the experts to deliver all stages of the E.I.A. process, whether that be undertaking the entire E.I.A., or assisting at one or more of the key stages. We can support the E.I.A. with specialists from all of the relevant environmental topic areas.

Our environmental consultants understand both how things work and how things are built and are excellent at integrating the environmental sciences on engineering projects – delivering solutions that are realistic, innovative and cost effective.

In order to achieve the best project outcomes, the environmental aspects of a project should be integrated within the planning and design process and aligned with the requirements of the other technical disciplines. To facilitate this coordinated approach, environmental advice can be provided at all stages of development, from early planning and design, as well as regulatory approvals.

### Our company provides the following services:



- Elaboration of environmental impact assessment studies for any type of activity according to Local and International Legislation
- Elaboration of Strategic Environmental Impact Assessment studies for various topics, including regional waste management plans, operational programs as well ex ante evaluation of Operation Programs co-funded by European Commission
- Elaboration and execution of Environmental monitoring programs



## Quality Control of the Company Services

The Quality Control of the services provided by our company focuses mainly in meeting specific quality requirements. The quality requirements are defined by the quality policy of the company and the conditions (general and specific) of the contracts that the company undertakes. In effect, quality control is the tool to certify the efficiency of quality assurance.

The efficient implementation of Quality Assurance by our company comprises of the following principles:

**Customer-focused strategy:** Our Company comprehends the primary and future needs of our customers, by forming close relation-ships through contact and communication.

**Leadership:** The personnel of our company, considers the head of the department as an instructor and leader, who is committed to the quality policy and major objectives.

**Personnel:** Our personnel participates actively in the provision of the services, by participating in consultations and phrasing opinions for solving problems.

**Procedures:** Providing services by our company is achieved by means of activities and resources managed by specific procedures. Our vast experience ensures that these procedures are intelligible by the whole personnel.

**System approach:** Our Company' s effectiveness and efficiency in achieving its quality objectives are contributed by identifying, understanding and managing all interrelated processes as a system

**Continual improvement:** One of the major permanent quality objectives of our company is the continual improvement of its overall performance

**Decision making:** Making decisions in any critical phase of providing services, is realized by taking into account all information and weighing them up based on our vast experience and logic. Information consist of reviews (services, surveys),



inspections, process measurement, competition, market knowledge and customer satisfaction ratings.

**Mutually beneficial co-operate relationships:** A mutually beneficial relationship has developed between our company and it is co-operates, providing us the possibility of constant improvement

All the above are common knowledge of our employees, gained through long-term co-operation and variety of services provided. Quality Control concerns indicatively:

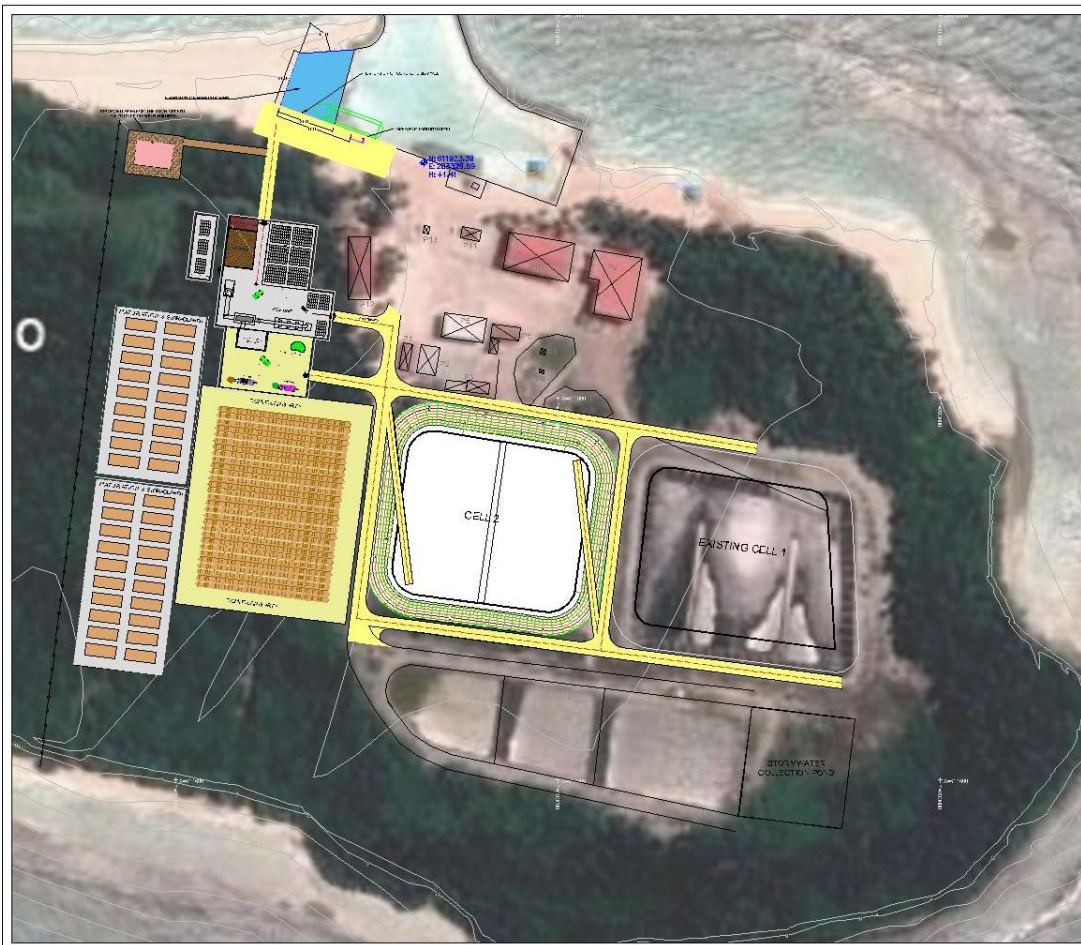
- Thorough proofing of each deliverable before final submission,
- Reviewing of each service,
- "Clients opinion, namely the view of the Contracting Authority on the quality of the design / service.
- The constant involvement of the "Leader" throughout the service provision stages.

## Areas of Specialization

Implementation of an Integrated Solid Waste Management Systems
Development of Solid Waste Management Plans (local / regional)
Elaboration of Feasibility study and Cost – Benefit Analysis study for SWM projects
Preparation of Environmental Impact Assessment study for environmental projects (including solid waste facilities: sanitary landfills, waste treatment facilities, sorting facilities, waste transfer stations)
Preparation of all engineering documents i.e. designs, drawings, bill of quantities, technical specifications and tender documents for environmental projects (including solid waste facilities: sanitary landfills, waste treatment facilities, sorting facilities, waste transfer stations, landfills/dumpsites restoration.
Design of Solid Waste facilities (sanitary landfills, waste treatment facilities, sorting facilities, waste transfer stations, landfills / dumpsites restoration)
Supervision of Solid Waste facilities (sanitary landfills, waste treatment facilities, sorting facilities, waste transfer stations, landfills / dumpsites restoration)
Provision of Technical Assistance at central and/or local administration level in SWM sector
Capacity building/institutional strengthening in the waste management sector

## Our Clients

Our Clients are National Governments and multi-national agencies, Regional and Local Authorities, Cyprus Ministry of Interior, Ministry of Environment and Energy in Maldives, World Bank (IBDR), UNRWA, Iliochora SA, ENVITEC SA, HELECTOR SA, ENERPRO SA, MESOGEOS SA, Konstantinidis SA and many more.

[illegible]

“Regional Solid Waste Management Facility  
in Zone One Ha., Hdh. & Sh. Atolls, Maldives”



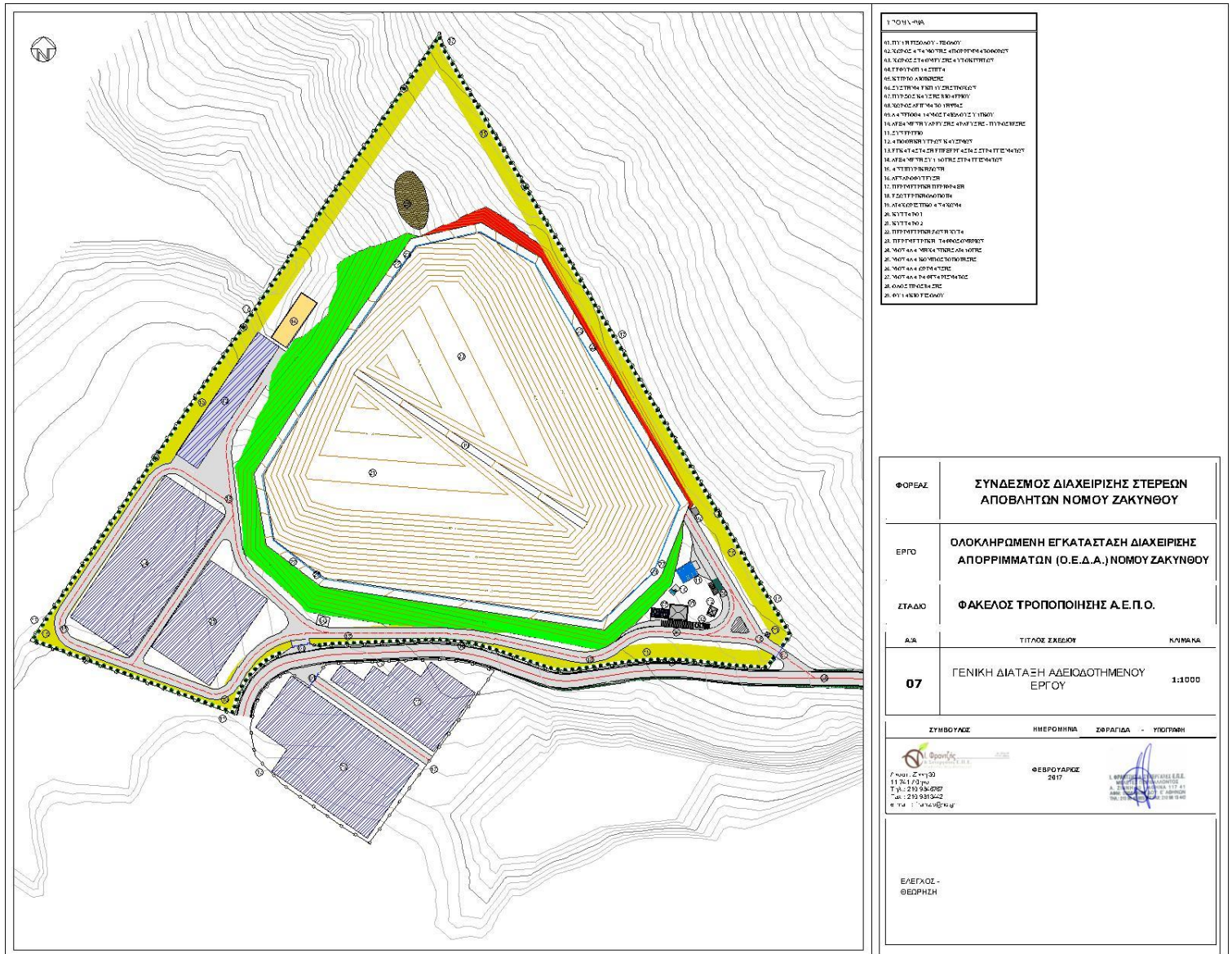


ΥΠΟΜΝΗΜΑ
1. ΕΠΙΧΕΙΡΗΣΗ
2. ΠΛΗΡΗΣ ΕΚΔΟΣΗ - ΣΧΕΔΙΟ
3. ΣΧΕΔΙΟ ΚΑΤΑΣΤΑΣΗΣ
4. ΠΡΟΒΛΕΨΗ ΚΑΤΑΣΤΑΣΗΣ
5. ΟΡΓΑΝΙΣΜΟΣ ΚΑΤΑΣΤΑΣΗΣ
6. ΚΑΤΑΣΤΑΣΗ ΚΑΤΑΣΤΑΣΗΣ
7. ΚΑΤΑΣΤΑΣΗ ΚΑΤΑΣΤΑΣΗΣ
8. ΚΑΤΑΣΤΑΣΗ ΚΑΤΑΣΤΑΣΗΣ
9. ΚΑΤΑΣΤΑΣΗ ΚΑΤΑΣΤΑΣΗΣ
10. ΚΑΤΑΣΤΑΣΗ ΚΑΤΑΣΤΑΣΗΣ
11. ΚΑΤΑΣΤΑΣΗ ΚΑΤΑΣΤΑΣΗΣ
12. ΚΑΤΑΣΤΑΣΗ ΚΑΤΑΣΤΑΣΗΣ
13. ΚΑΤΑΣΤΑΣΗ ΚΑΤΑΣΤΑΣΗΣ
14. ΚΑΤΑΣΤΑΣΗ ΚΑΤΑΣΤΑΣΗΣ
15. ΚΑΤΑΣΤΑΣΗ ΚΑΤΑΣΤΑΣΗΣ
16. ΚΑΤΑΣΤΑΣΗ ΚΑΤΑΣΤΑΣΗΣ
17. ΚΑΤΑΣΤΑΣΗ ΚΑΤΑΣΤΑΣΗΣ
18. ΚΑΤΑΣΤΑΣΗ ΚΑΤΑΣΤΑΣΗΣ
19. ΚΑΤΑΣΤΑΣΗ ΚΑΤΑΣΤΑΣΗΣ
20. ΚΑΤΑΣΤΑΣΗ ΚΑΤΑΣΤΑΣΗΣ
21. ΚΑΤΑΣΤΑΣΗ ΚΑΤΑΣΤΑΣΗΣ
22. ΚΑΤΑΣΤΑΣΗ ΚΑΤΑΣΤΑΣΗΣ
23. ΚΑΤΑΣΤΑΣΗ ΚΑΤΑΣΤΑΣΗΣ
24. ΚΑΤΑΣΤΑΣΗ ΚΑΤΑΣΤΑΣΗΣ
25. ΚΑΤΑΣΤΑΣΗ ΚΑΤΑΣΤΑΣΗΣ
26. ΚΑΤΑΣΤΑΣΗ ΚΑΤΑΣΤΑΣΗΣ
27. ΚΑΤΑΣΤΑΣΗ ΚΑΤΑΣΤΑΣΗΣ
28. ΚΑΤΑΣΤΑΣΗ ΚΑΤΑΣΤΑΣΗΣ
29. ΚΑΤΑΣΤΑΣΗ ΚΑΤΑΣΤΑΣΗΣ
30. ΚΑΤΑΣΤΑΣΗ ΚΑΤΑΣΤΑΣΗΣ
31. ΚΑΤΑΣΤΑΣΗ ΚΑΤΑΣΤΑΣΗΣ
32. ΚΑΤΑΣΤΑΣΗ ΚΑΤΑΣΤΑΣΗΣ
33. ΚΑΤΑΣΤΑΣΗ ΚΑΤΑΣΤΑΣΗΣ
34. ΚΑΤΑΣΤΑΣΗ ΚΑΤΑΣΤΑΣΗΣ
35. ΚΑΤΑΣΤΑΣΗ ΚΑΤΑΣΤΑΣΗΣ
36. ΚΑΤΑΣΤΑΣΗ ΚΑΤΑΣΤΑΣΗΣ
37. ΚΑΤΑΣΤΑΣΗ ΚΑΤΑΣΤΑΣΗΣ
38. ΚΑΤΑΣΤΑΣΗ ΚΑΤΑΣΤΑΣΗΣ
39. ΚΑΤΑΣΤΑΣΗ ΚΑΤΑΣΤΑΣΗΣ
40. ΚΑΤΑΣΤΑΣΗ ΚΑΤΑΣΤΑΣΗΣ
41. ΚΑΤΑΣΤΑΣΗ ΚΑΤΑΣΤΑΣΗΣ
42. ΚΑΤΑΣΤΑΣΗ ΚΑΤΑΣΤΑΣΗΣ
43. ΚΑΤΑΣΤΑΣΗ ΚΑΤΑΣΤΑΣΗΣ
44. ΚΑΤΑΣΤΑΣΗ ΚΑΤΑΣΤΑΣΗΣ
45. ΚΑΤΑΣΤΑΣΗ ΚΑΤΑΣΤΑΣΗΣ
46. ΚΑΤΑΣΤΑΣΗ ΚΑΤΑΣΤΑΣΗΣ
47. ΚΑΤΑΣΤΑΣΗ ΚΑΤΑΣΤΑΣΗΣ
48. ΚΑΤΑΣΤΑΣΗ ΚΑΤΑΣΤΑΣΗΣ
49. ΚΑΤΑΣΤΑΣΗ ΚΑΤΑΣΤΑΣΗΣ
50. ΚΑΤΑΣΤΑΣΗ ΚΑΤΑΣΤΑΣΗΣ
51. ΚΑΤΑΣΤΑΣΗ ΚΑΤΑΣΤΑΣΗΣ
52. ΚΑΤΑΣΤΑΣΗ ΚΑΤΑΣΤΑΣΗΣ
53. ΚΑΤΑΣΤΑΣΗ ΚΑΤΑΣΤΑΣΗΣ
54. ΚΑΤΑΣΤΑΣΗ ΚΑΤΑΣΤΑΣΗΣ
55. ΚΑΤΑΣΤΑΣΗ ΚΑΤΑΣΤΑΣΗΣ
56. ΚΑΤΑΣΤΑΣΗ ΚΑΤΑΣΤΑΣΗΣ
57. ΚΑΤΑΣΤΑΣΗ ΚΑΤΑΣΤΑΣΗΣ
58. ΚΑΤΑΣΤΑΣΗ ΚΑΤΑΣΤΑΣΗΣ
59. ΚΑΤΑΣΤΑΣΗ ΚΑΤΑΣΤΑΣΗΣ
60. ΚΑΤΑΣΤΑΣΗ ΚΑΤΑΣΤΑΣΗΣ
61. ΚΑΤΑΣΤΑΣΗ ΚΑΤΑΣΤΑΣΗΣ
62. ΚΑΤΑΣΤΑΣΗ ΚΑΤΑΣΤΑΣΗΣ
63. ΚΑΤΑΣΤΑΣΗ ΚΑΤΑΣΤΑΣΗΣ
64. ΚΑΤΑΣΤΑΣΗ ΚΑΤΑΣΤΑΣΗΣ
65. ΚΑΤΑΣΤΑΣΗ ΚΑΤΑΣΤΑΣΗΣ
66. ΚΑΤΑΣΤΑΣΗ ΚΑΤΑΣΤΑΣΗΣ
67. ΚΑΤΑΣΤΑΣΗ ΚΑΤΑΣΤΑΣΗΣ
68. ΚΑΤΑΣΤΑΣΗ ΚΑΤΑΣΤΑΣΗΣ
69. ΚΑΤΑΣΤΑΣΗ ΚΑΤΑΣΤΑΣΗΣ
70. ΚΑΤΑΣΤΑΣΗ ΚΑΤΑΣΤΑΣΗΣ
71. ΚΑΤΑΣΤΑΣΗ ΚΑΤΑΣΤΑΣΗΣ
72. ΚΑΤΑΣΤΑΣΗ ΚΑΤΑΣΤΑΣΗΣ
73. ΚΑΤΑΣΤΑΣΗ ΚΑΤΑΣΤΑΣΗΣ
74. ΚΑΤΑΣΤΑΣΗ ΚΑΤΑΣΤΑΣΗΣ
75. ΚΑΤΑΣΤΑΣΗ ΚΑΤΑΣΤΑΣΗΣ
76. ΚΑΤΑΣΤΑΣΗ ΚΑΤΑΣΤΑΣΗΣ
77. ΚΑΤΑΣΤΑΣΗ ΚΑΤΑΣΤΑΣΗΣ
78. ΚΑΤΑΣΤΑΣΗ ΚΑΤΑΣΤΑΣΗΣ
79. ΚΑΤΑΣΤΑΣΗ ΚΑΤΑΣΤΑΣΗΣ
80. ΚΑΤΑΣΤΑΣΗ ΚΑΤΑΣΤΑΣΗΣ
81. ΚΑΤΑΣΤΑΣΗ ΚΑΤΑΣΤΑΣΗΣ
82. ΚΑΤΑΣΤΑΣΗ ΚΑΤΑΣΤΑΣΗΣ
83. ΚΑΤΑΣΤΑΣΗ ΚΑΤΑΣΤΑΣΗΣ
84. ΚΑΤΑΣΤΑΣΗ ΚΑΤΑΣΤΑΣΗΣ
85. ΚΑΤΑΣΤΑΣΗ ΚΑΤΑΣΤΑΣΗΣ
86. ΚΑΤΑΣΤΑΣΗ ΚΑΤΑΣΤΑΣΗΣ
87. ΚΑΤΑΣΤΑΣΗ ΚΑΤΑΣΤΑΣΗΣ
88. ΚΑΤΑΣΤΑΣΗ ΚΑΤΑΣΤΑΣΗΣ
89. ΚΑΤΑΣΤΑΣΗ ΚΑΤΑΣΤΑΣΗΣ
90. ΚΑΤΑΣΤΑΣΗ ΚΑΤΑΣΤΑΣΗΣ
91. ΚΑΤΑΣΤΑΣΗ ΚΑΤΑΣΤΑΣΗΣ
92. ΚΑΤΑΣΤΑΣΗ ΚΑΤΑΣΤΑΣΗΣ
93. ΚΑΤΑΣΤΑΣΗ ΚΑΤΑΣΤΑΣΗΣ
94. ΚΑΤΑΣΤΑΣΗ ΚΑΤΑΣΤΑΣΗΣ
95. ΚΑΤΑΣΤΑΣΗ ΚΑΤΑΣΤΑΣΗΣ
96. ΚΑΤΑΣΤΑΣΗ ΚΑΤΑΣΤΑΣΗΣ
97. ΚΑΤΑΣΤΑΣΗ ΚΑΤΑΣΤΑΣΗΣ
98. ΚΑΤΑΣΤΑΣΗ ΚΑΤΑΣΤΑΣΗΣ
99. ΚΑΤΑΣΤΑΣΗ ΚΑΤΑΣΤΑΣΗΣ
100. ΚΑΤΑΣΤΑΣΗ ΚΑΤΑΣΤΑΣΗΣ

ΦΟΡΕΑΣ ΥΛΟΠΟΙΗΣΗΣ	ΥΠΟΥΡΓΕΙΟ ΕΣΩΤΕΡΙΚΩΝ ΤΕΧΝΙΚΕΣ ΥΠΗΡΕΣΙΕΣ ΤΟΜΕΑΣ ΔΙΑΧΕΙΡΙΣΗΣ ΣΤΕΡΕΩΝ ΑΠΟΒΑΛΤΩΝ	
ΜΕΛΕΤΗ	«ΠΑΡΟΧΗ ΥΠΗΡΕΣΙΩΝ ΣΥΜΒΟΥΛΟΥ ΓΙΑ ΤΗΝ ΕΤΟΙΜΑΣΙΑ ΟΛΩΝ ΤΩΝ ΑΝΑΓΚΑΙΩΝ ΜΕΛΕΤΩΝ ΚΑΙ ΕΓΓΡΑΦΩΝ ΓΙΑ ΤΗΝ ΚΑΤΑΣΚΕΥΗ ΚΑΙ ΛΕΙΤΟΥΡΓΙΑ ΕΓΚΑΤΑΣΤΑΣΕΩΝ ΟΛΟΚΛΗΡΩΜΕΝΗΣ ΔΙΑΧΕΙΡΙΣΗΣ ΤΩΝ ΟΙΚΙΑΚΩΝ ΣΤΕΡΕΩΝ ΑΠΟΡΡΙΜΜΑΤΩΝ ΤΗΣ ΕΠΑΡΧΙΑΣ ΛΕΥΚΩΣΙΑΣ ΚΑΙ ΤΗΝ ΕΠΙΒΛΕΨΗ ΤΩΝ ΚΑΤΑΣΚΕΥΑΣΤΙΚΩΝ ΕΡΓΑΣΙΩΝ» (Αρ. Σύμβασης: 11/2009)	
ΣΤΑΔΙΟ ΜΕΛΕΤΗΣ	ΤΕΧΝΙΚΗ ΠΡΟΜΕΛΕΤΗ	
Α/Α	ΤΙΤΛΟΣ ΣΧΕΔΙΟΥ	ΚΑΔΜΑ
Ο-2.3	ΕΝΔΕΙΚΤΙΚΗ ΓΕΝΙΚΗ ΔΙΑΤΑΞΗ ΕΡΓΩΝ Ο.Ε.Α.Α. (ΦΑΣΗ Γ')	1:2.000
ΑΝΑΔΟΧΟΣ ΕΡΓΟΥ		
ΥΠΟΓΡΑΦΗ - ΘΕΩΡΗΣΗ		ΗΜΕΡΟΜΗΝΙΑ
ΙΩΑΝΝΗΣ Κ. ΣΥΜΒΟΥΛΟΣ ΜΕΛΕΤΕΣ ΠΕΡΙΒΑΛΛΟΝΤΟΣ Α. ΖΙΝΝΗ 10 - ΑΘΗΝΑ 11741 ΑΡΧΙΤΕΚΤΟΝΙΚΟ ΔΙΑΓΡΑΜΜΑ ΤΗΛ: 2107848877 FAX: 2107813462		ΑΠΡΙΛΙΟΣ 2012

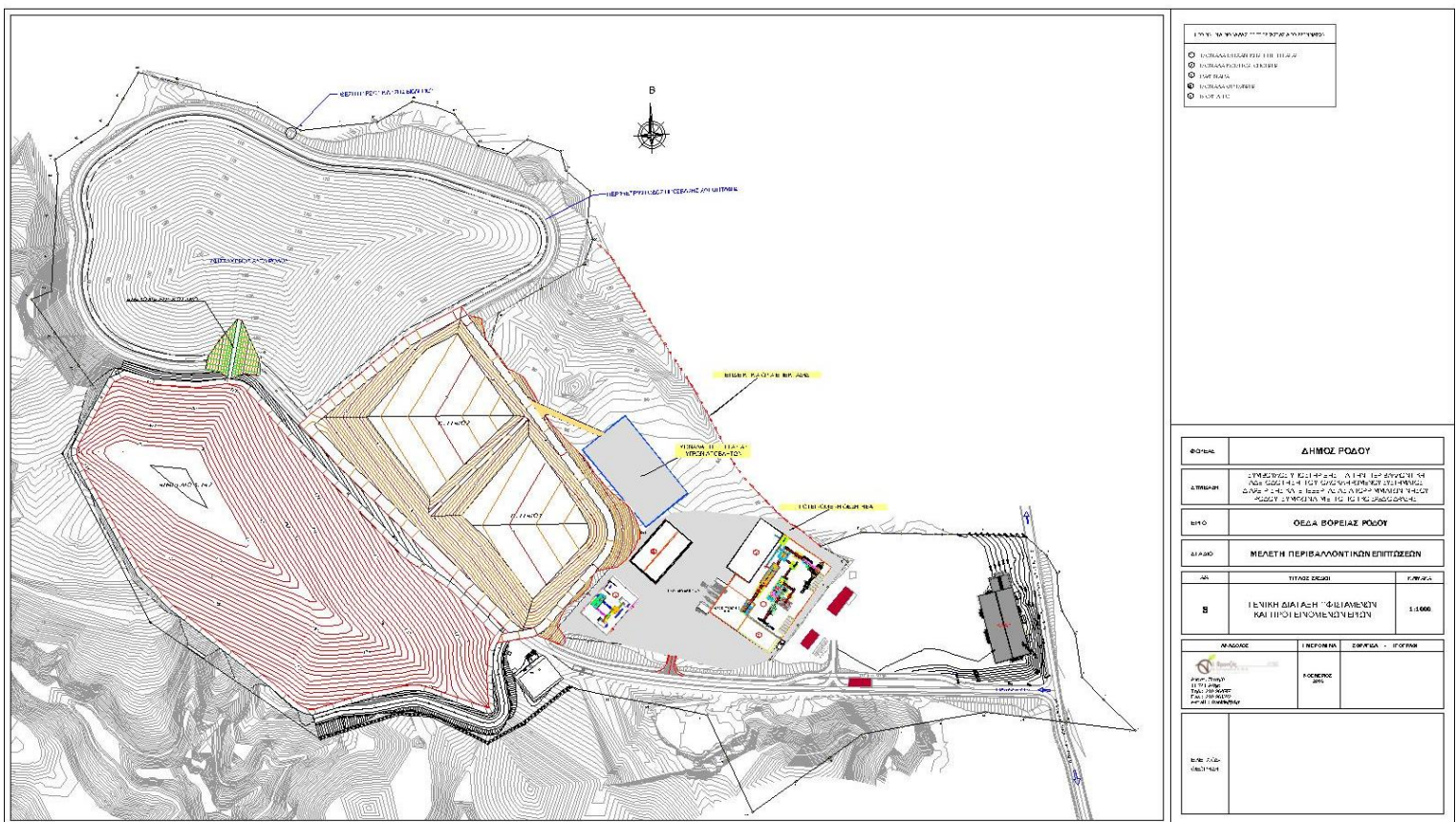
"Integrated Installation for Domestic Solid Waste Management  
in the Nicosia District, Cyprus"



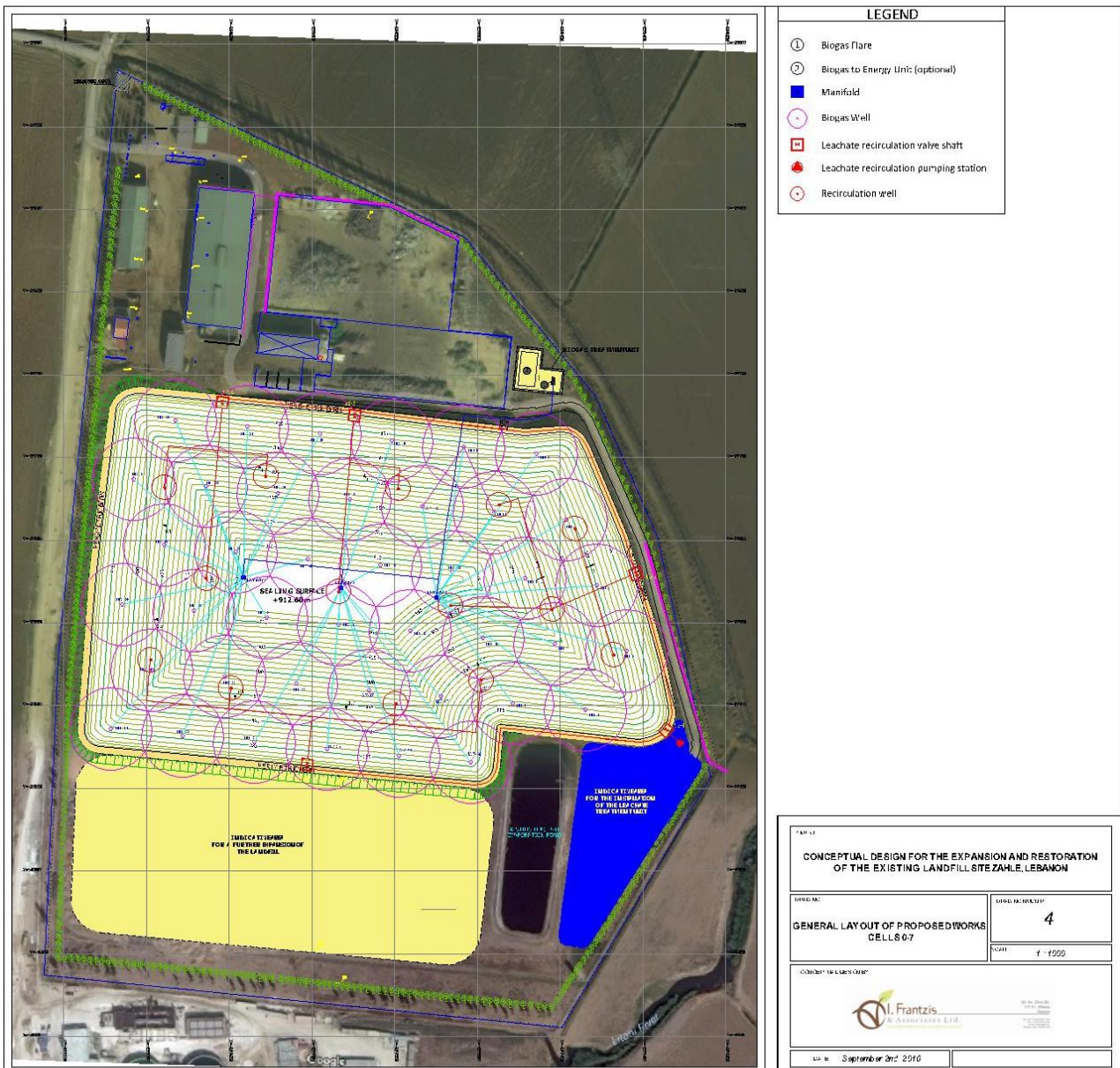


“Integrated Solid Waste Management Facility in Zakynthos, Greece”









“Expansion and restoration plan for the existing landfill site in Zahle, Lebanon”





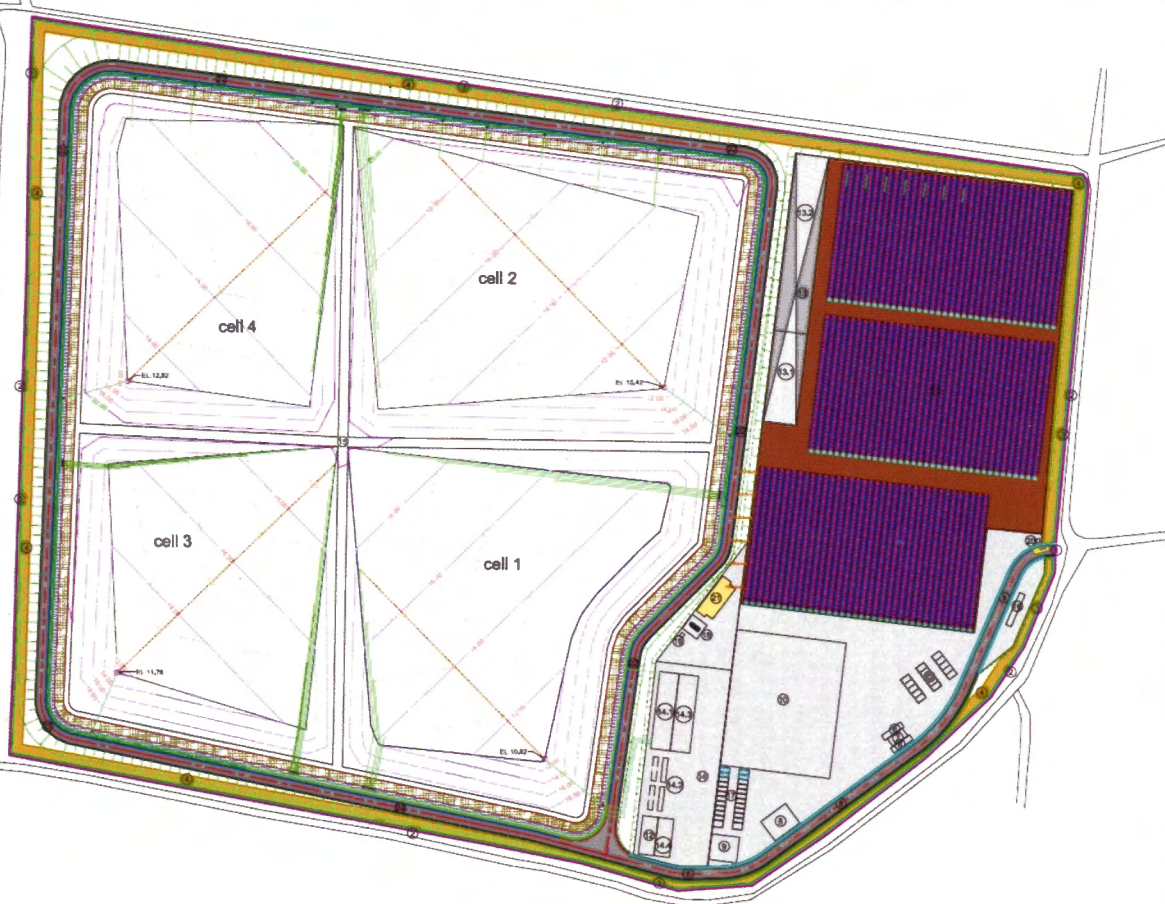
PROJECT	
CONCEPTUAL DESIGN FOR THE RESTORATION OF THE EXISTING TRIPOLI DUMPSITE, LEBANON	
DRAWING:	DRAWING NUMBER
LAYOUT OF THE PROPOSED RESTORATION WORKS	1
CONCEPTUAL DESIGN BY:	SCALE
I. Frantzis & Associates Ltd. ENVIRONMENTAL CONSULTANTS	1 : 1000
DATE:	October, 2018

“Closure plan for the existing landfill site in Tripoli, Lebanon”







projekt - teknik



Stefanie  
Lehner

REPUBLICA E SHQIPERISE  
MINISTRIA E MUNDISIT  
MINISTRIA E TRANSPORTIT DHE INFRASTRUKTURES

**DOKUMENTAT STANDARTE TË PROCEДУRIS PËRZGJEDHËSE  
KONKURRËSE PËR DHËNIEN ME KONCESION TË NDËRTIMIT TË  
LANDFILL PËR TRAJTIMIN E MBETJEVE TË  
ORAKUT DIBRËS**

Verandodhja	Fshati Rreth	Bashkia	Manëz
projektes			
projektes		EL-BU 2009	
administrative	Lexodhja Vasilis		
arkitektur	Arad DHINA	Ar. Lu. A. 198	
emertimi	Seksioni i pushtet, mpanemmet te dregaz		
data	Nentur 2014	fieta	2B3 1

www.EL-BU2009.com  
info@elbu2009.com



EL-BU 2009

PLANI I PERGJITHSHEM I RRJETIT TE GRUMBULLIMIT TE LENGJEVE 1:2000

Rruga Anton Zaku Cajupi, Ndërtues Nr 3  
111, Tirana, Albania  
Tel: 03555 4 4304777  
Mobil: 0692005697

www.El-BU2009.com  
info@elbu2009.com



## "Construction of the Waste Treatment Facility and Landfill Site of Durres District, Albania"



**Environmental Engineering Consulting Company**

30, Anast. Zinni Str., 117 41, Athens, Greece

Tel.: (+30) 210 98 46 853

(+30) 210 98 46 767

Fax: (+30) 210 98 13 442

Site: [www.i-frantzis.com](http://www.i-frantzis.com)